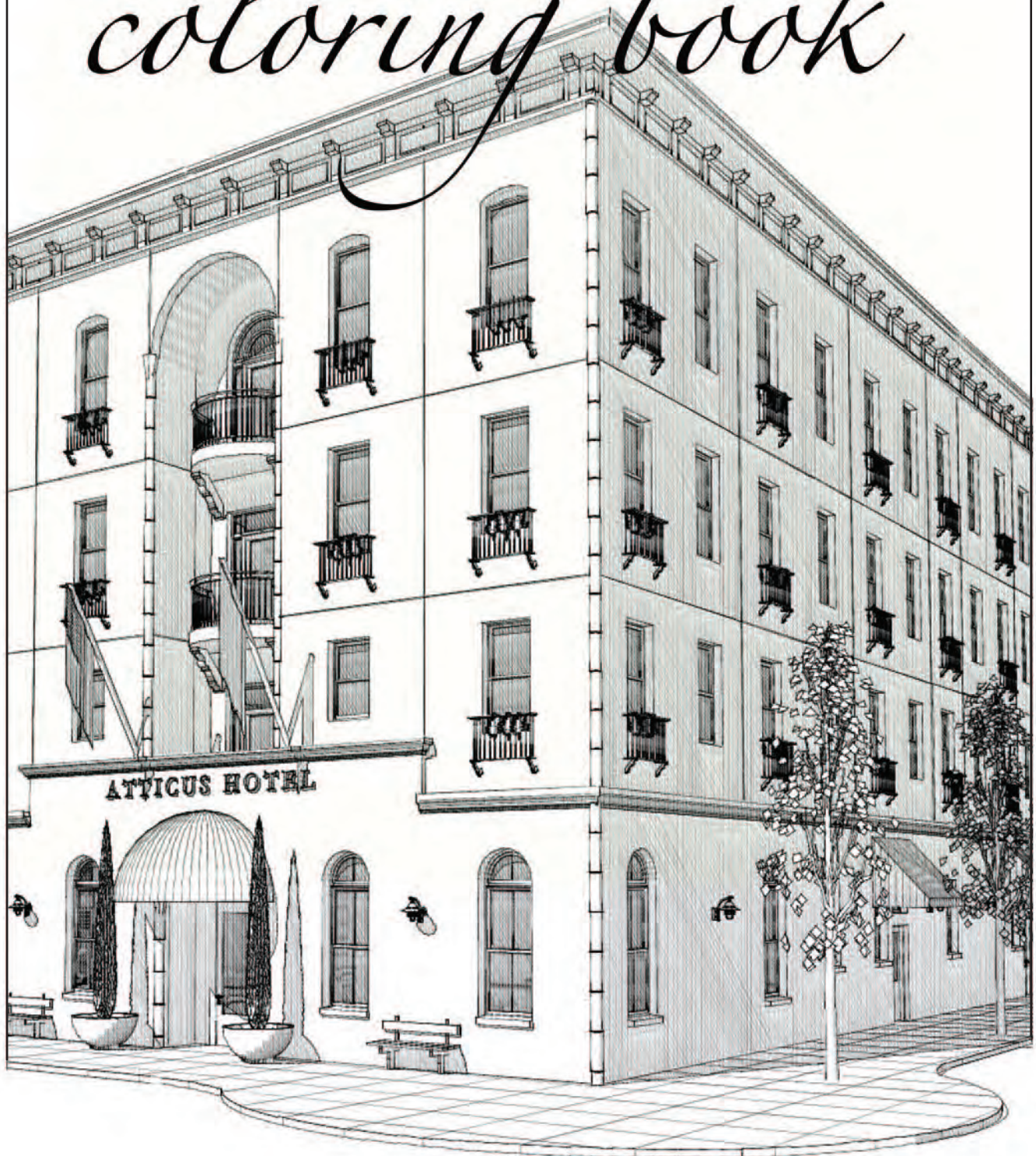


ATTICUS

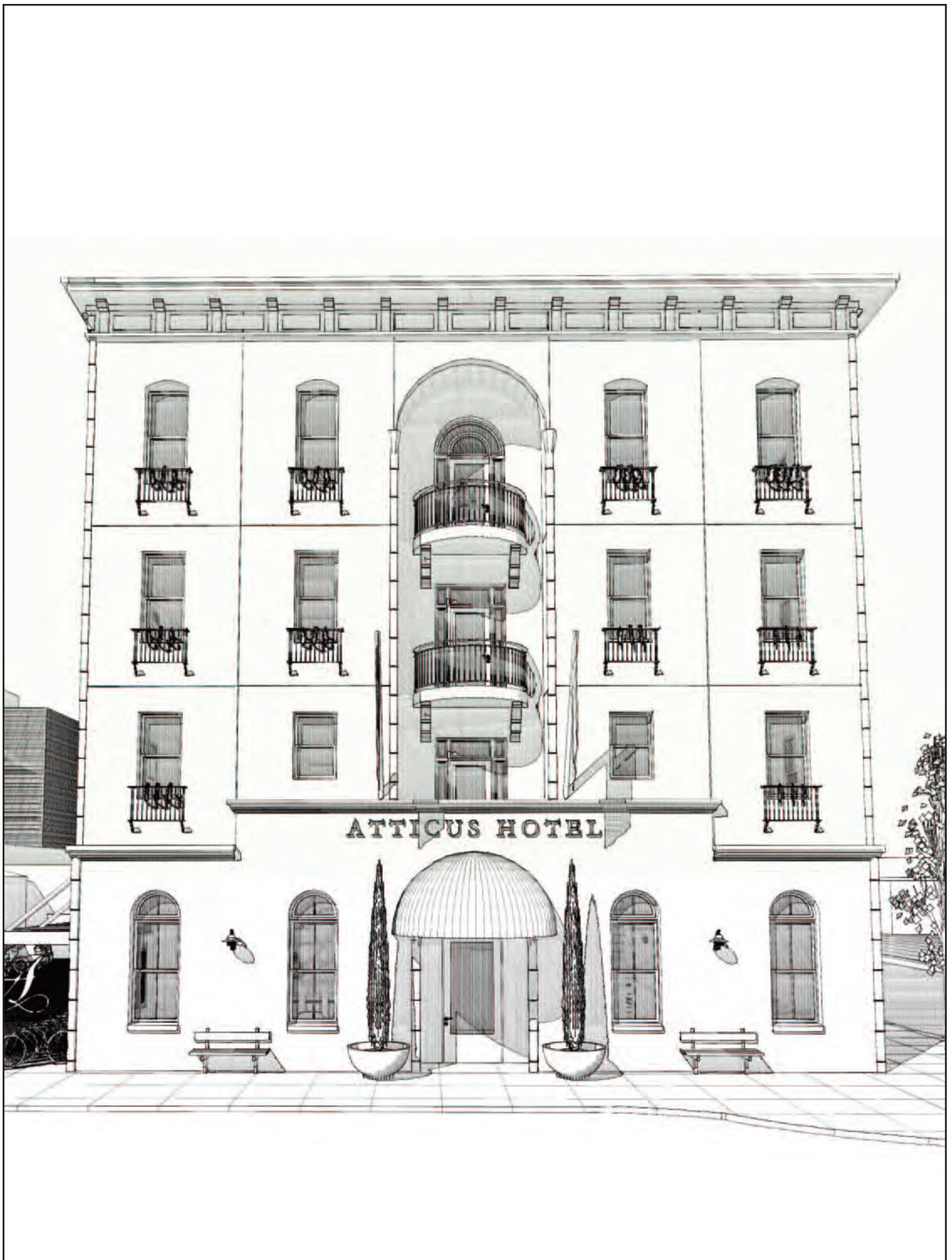
MCMINNVILLE | HOTEL | ORE • EST 2018

coloring book

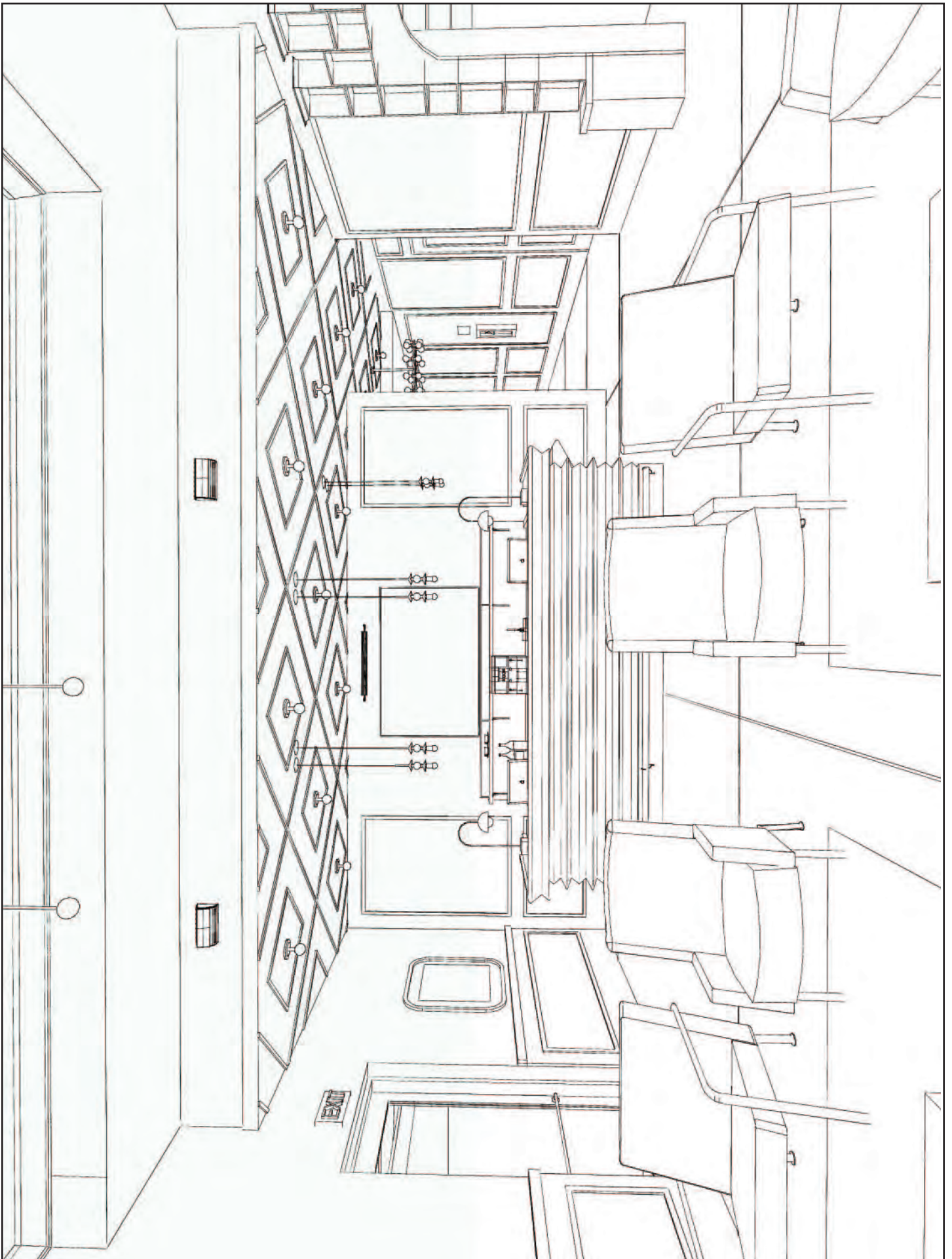




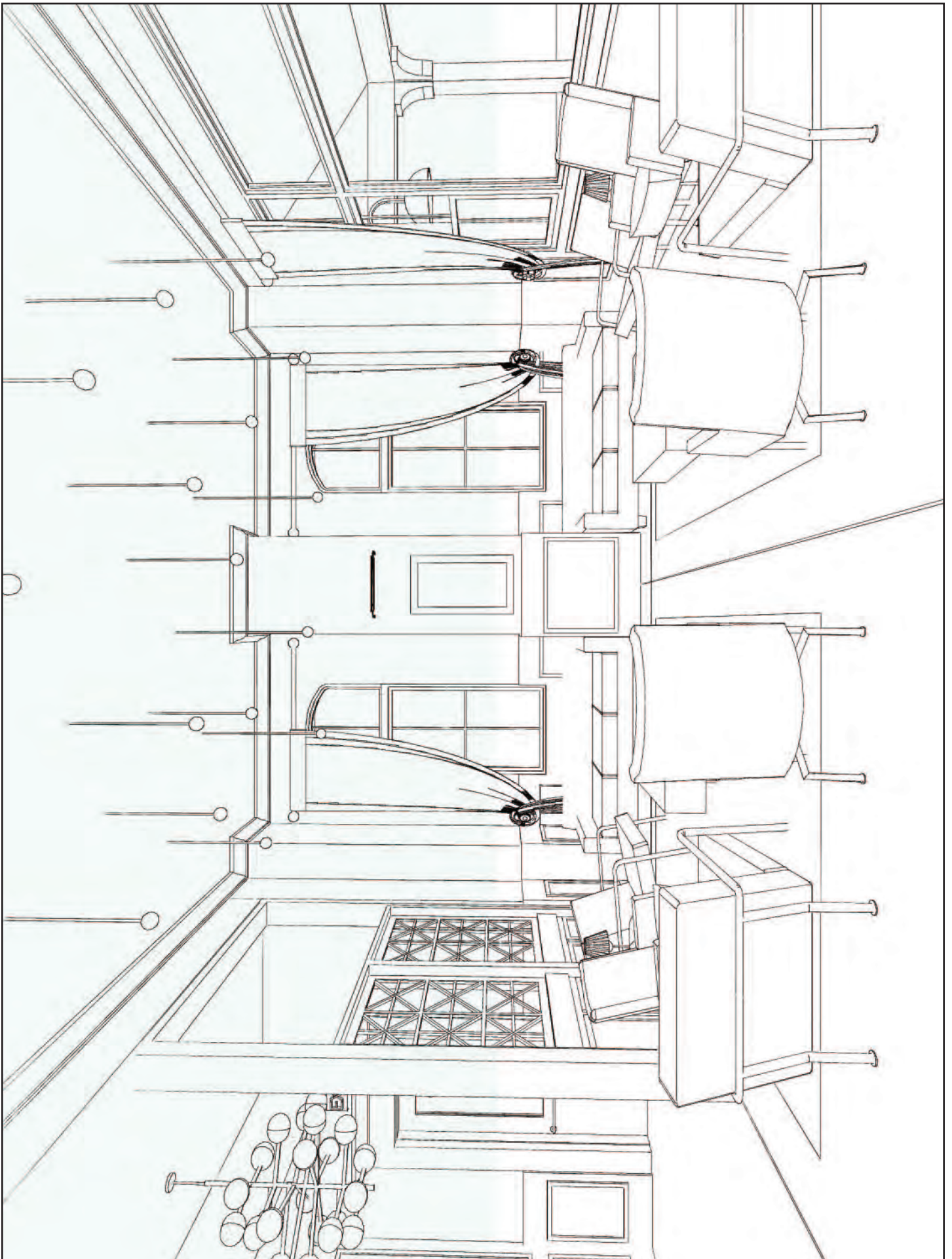
Architect's conceptual rendering of the hotel - Nathan Cooperider, Architect, 2016



Architect's conceptual rendering of the hotel - Nathan Cooperider, Architect, 2016



Architect's conceptual rendering of the lobby - Nathan Cooperider, Architect, 2016

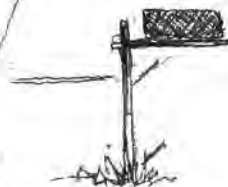


Architect's conceptual rendering of the lobby - Nathan Cooperider, Architect, 2016

This is my new
Koh-i-noor .25 pen
filled with
Daler Rowney's transparent
FW acrylic artist ink
in Sepia 251...
Wee Ha!!



000



Grandma & Grandpa

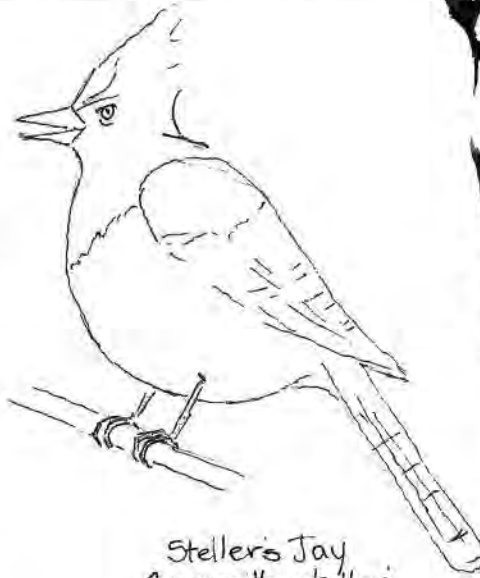
Big Maple Tree.
Wheatland Ferry

May 2, 2002

December 24, 2001

Winter Vacation Trip

Painted Skys greeted us again this morning. pinks, blues and golds
 The foam on the waves looked like frozen strawberry dagvares. Yum
 after stowing our gear in the car, the local
 bird population appeared
 to Police our camp site.
 Too Sad - we only had toast
 for breakfast (that I
 defended from the Jays
 as it browned on the fire!)
 Not many left overs
 today guys!



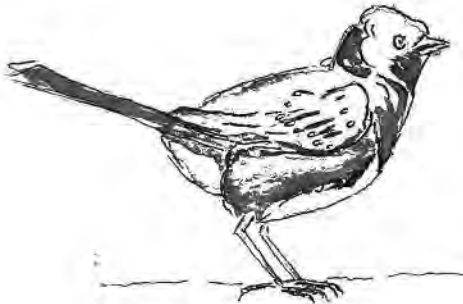
Steller's Jay
Cyanocitta stelleri
 11½"

Group of 3 like
 corn chips &
 toast!

Flickers,
 Wrens & Juncos too!



Downy
 Woodpecker
Picoides pubescens
 6¾"
 smallest woodpecker



Spotted Towhee
Pipilo maculatus
 8½" (I thought he
 was a robin
 at first!)



Salal (*Gaultheria shallon*)
 Evergreen Huckleberry (*Vaccinium
 ovatum*)
 Sword Fern (*Polystichum munitum*)

found at Lookout State park
 Spruce forest behind
 our Yurt...

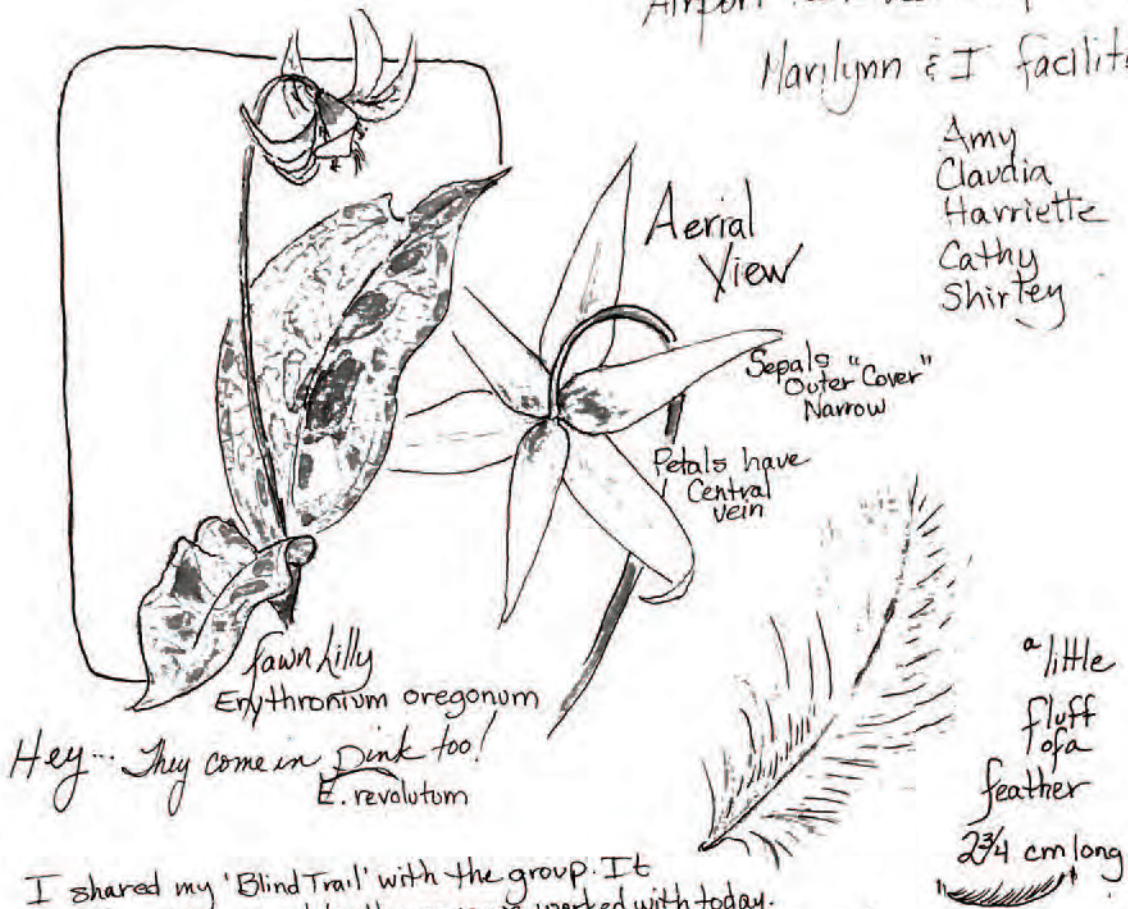
Sunny & Cold
 Windy

Brightening
 7:20A

Even song
 5:00P

Airport Park Workshop Day 1
Marilynn & I facilitating

Amy
Claudia
Harriette
Cathy
Shirley



I shared my 'Blind Trail' with the group. It was thoroughly enjoyed by the group we worked with today. I also spoke a bit about color and use of brushes. WHAT FUN...

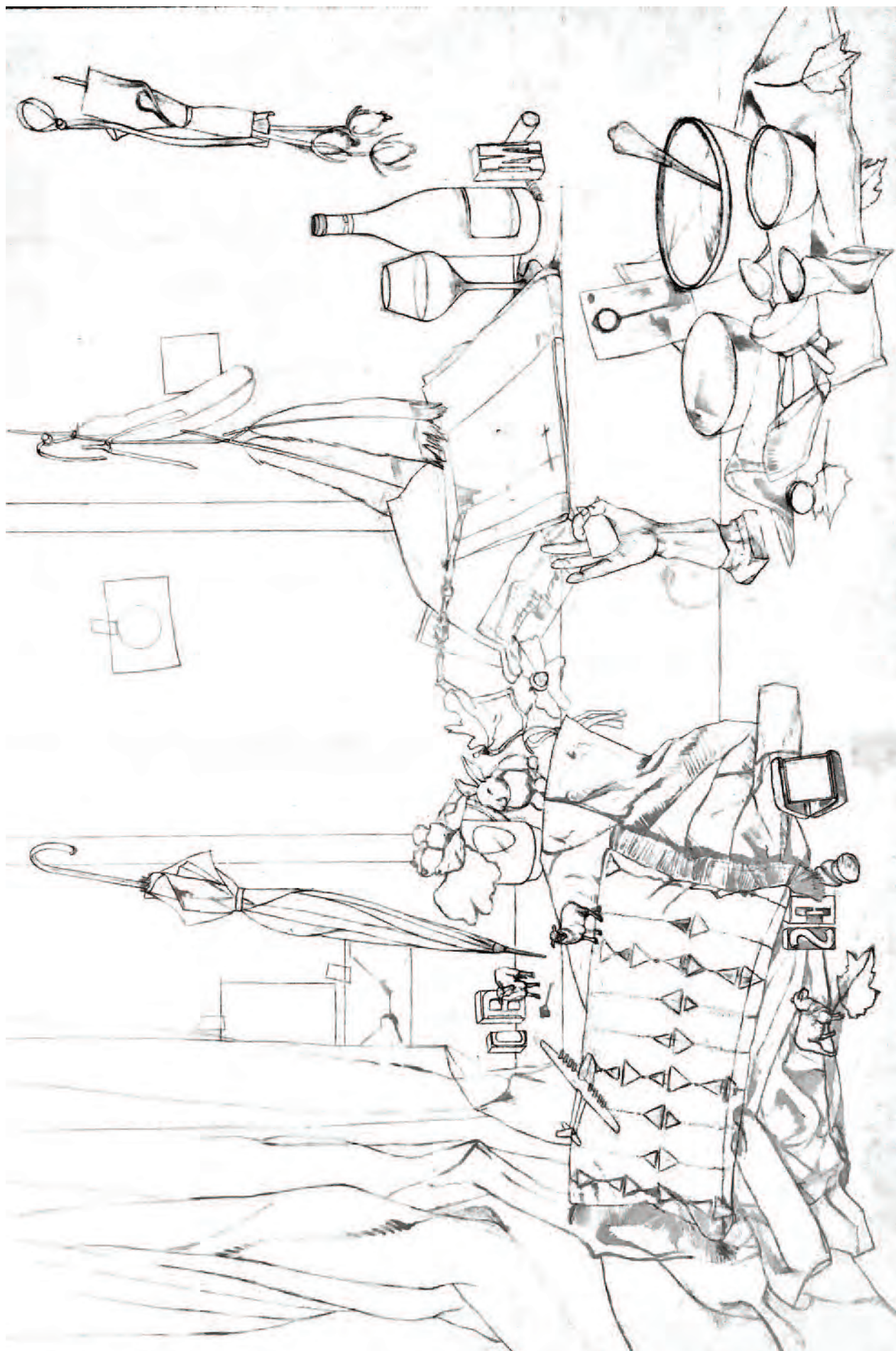
In Bloom...
Spring Beauties
Wild Ginger
Trillium
Johnny-on-the-spot/Violets
Fawn Lillys
Sedges



ladies Playing at the table!

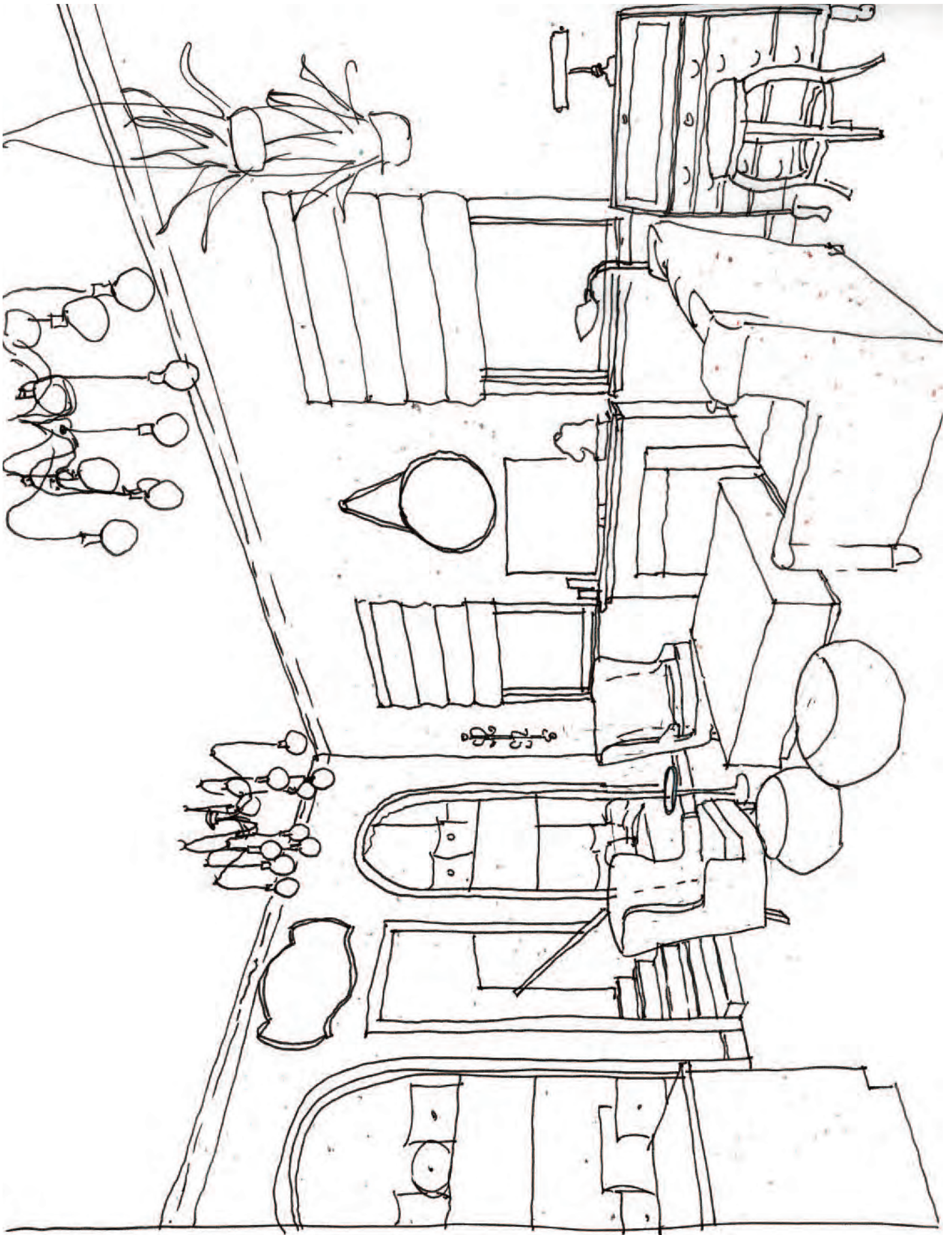
Cloudy warm and dry.
No big storm as forecast!
(while we were in the field anyway)

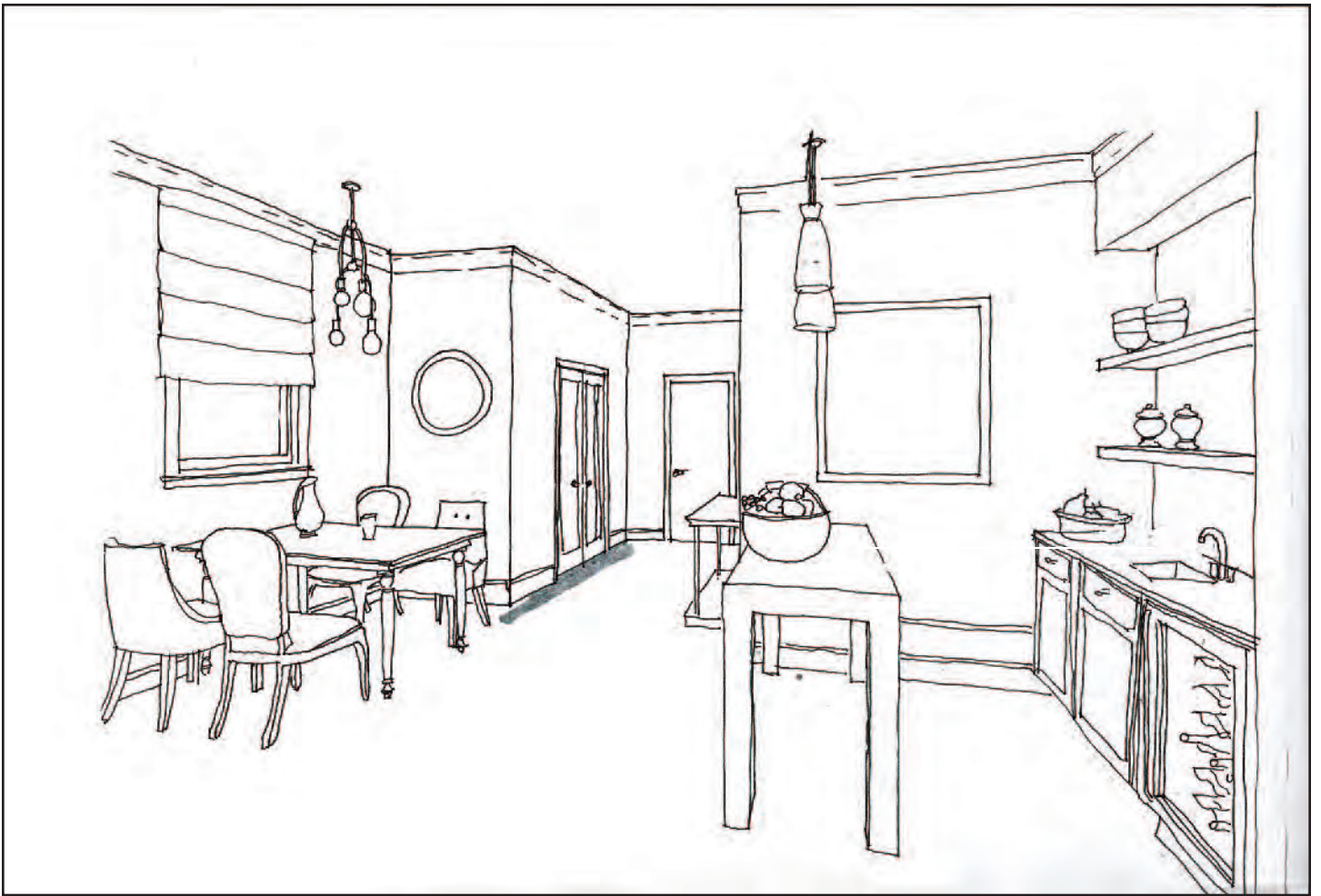
The fourteenth of April, an incredible day in the field!

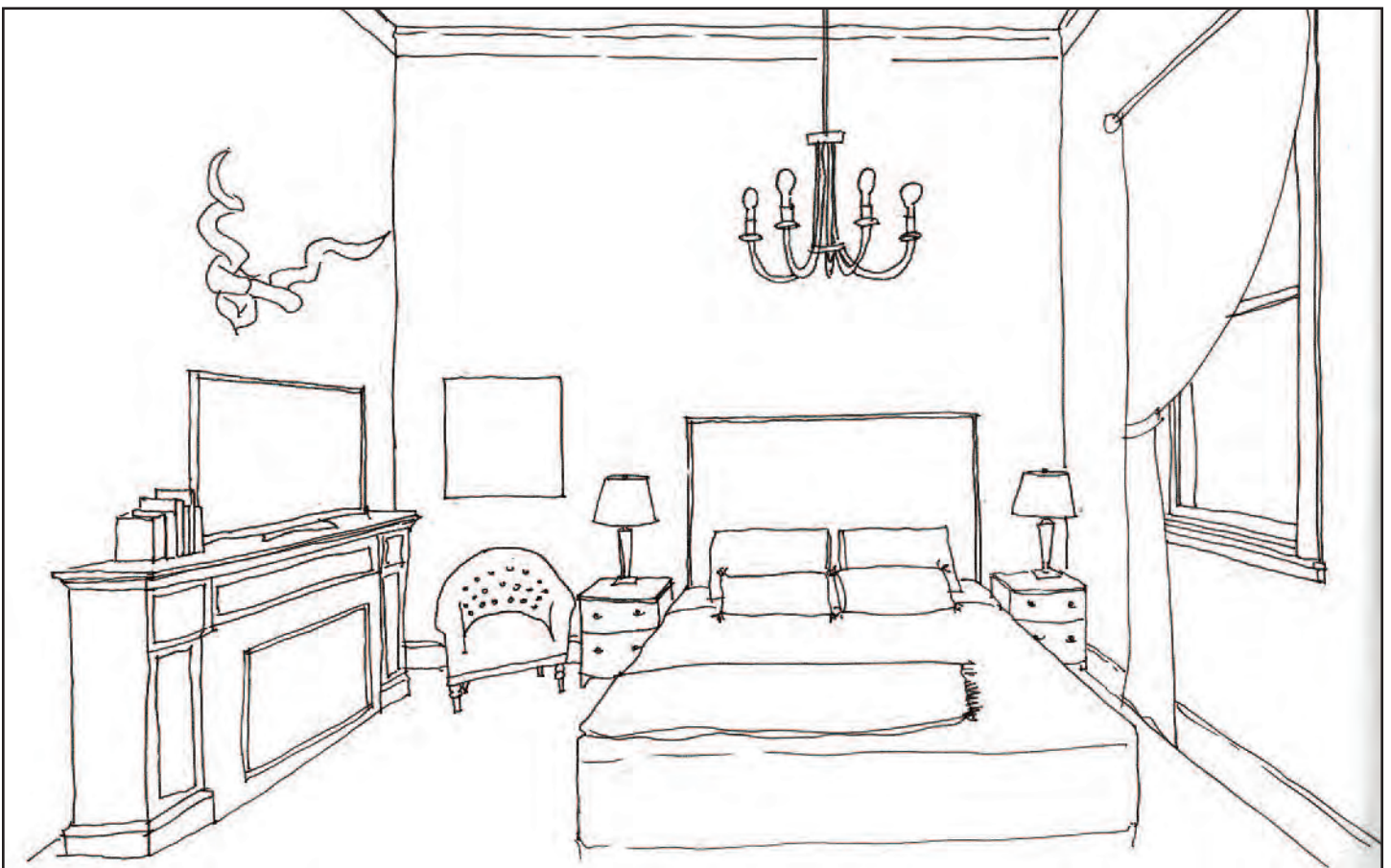
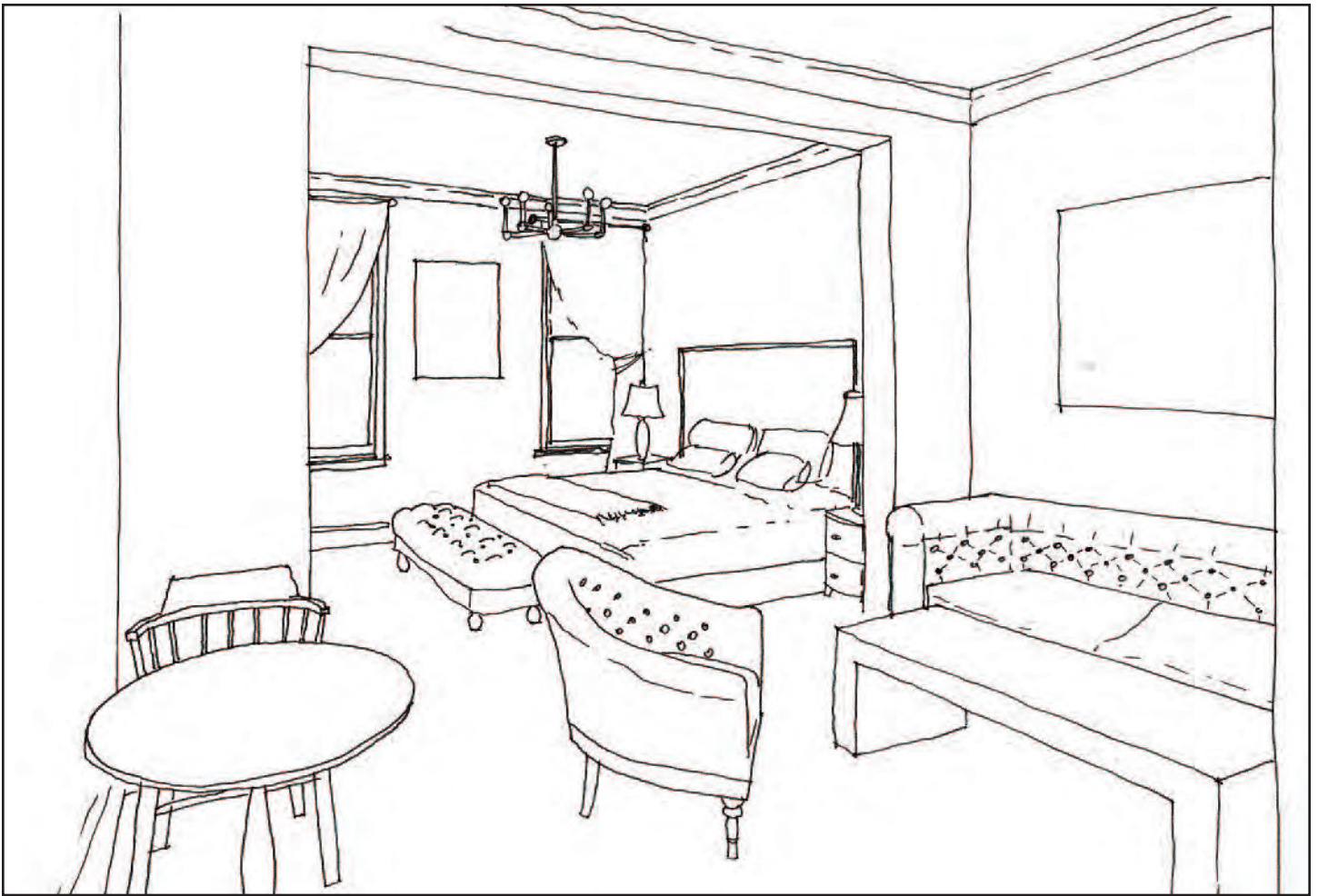


Part of the Atticus Hotel art collection.

Still life of various elements central to the character and history of McMinnville. - Carmen Borrásé, 2018



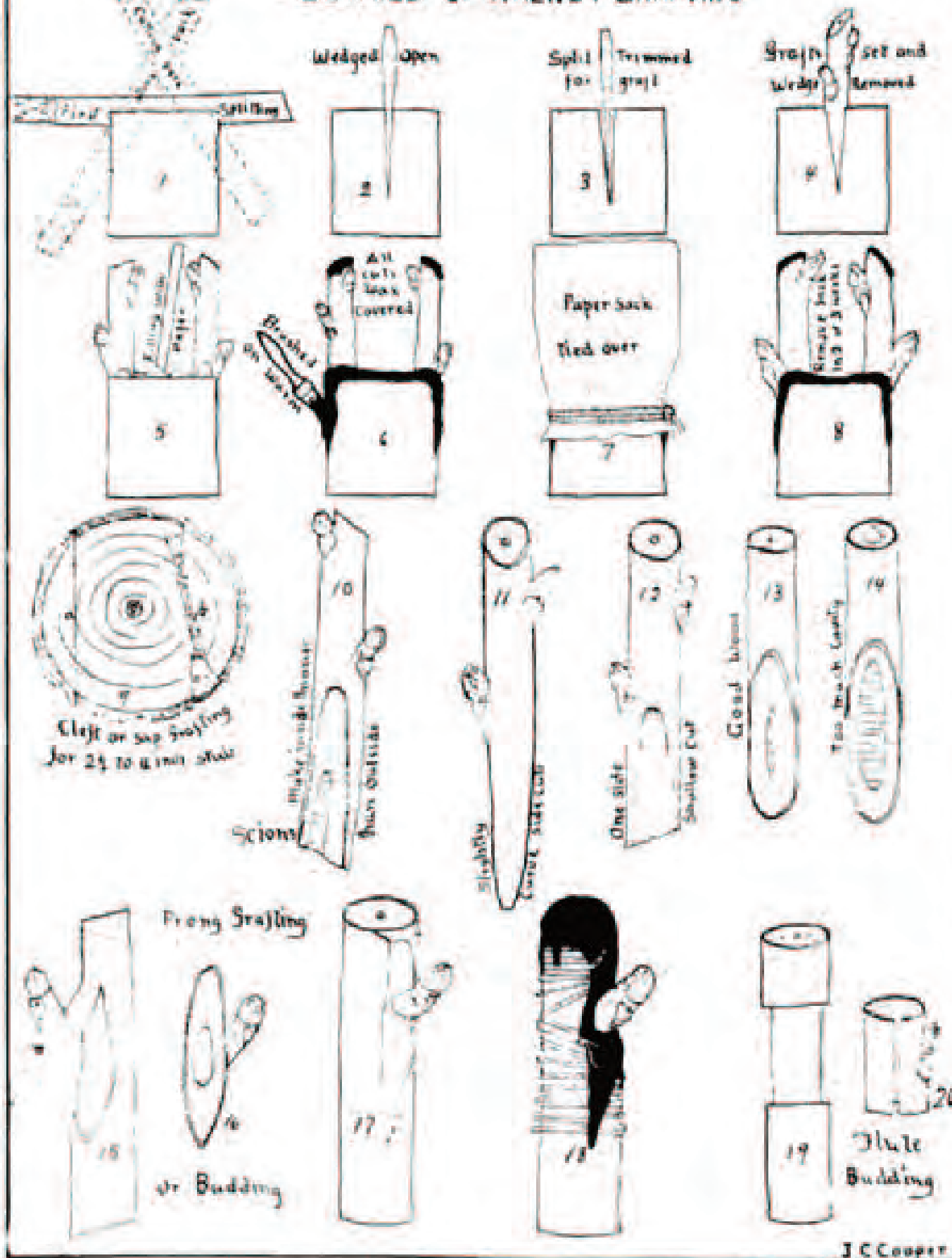






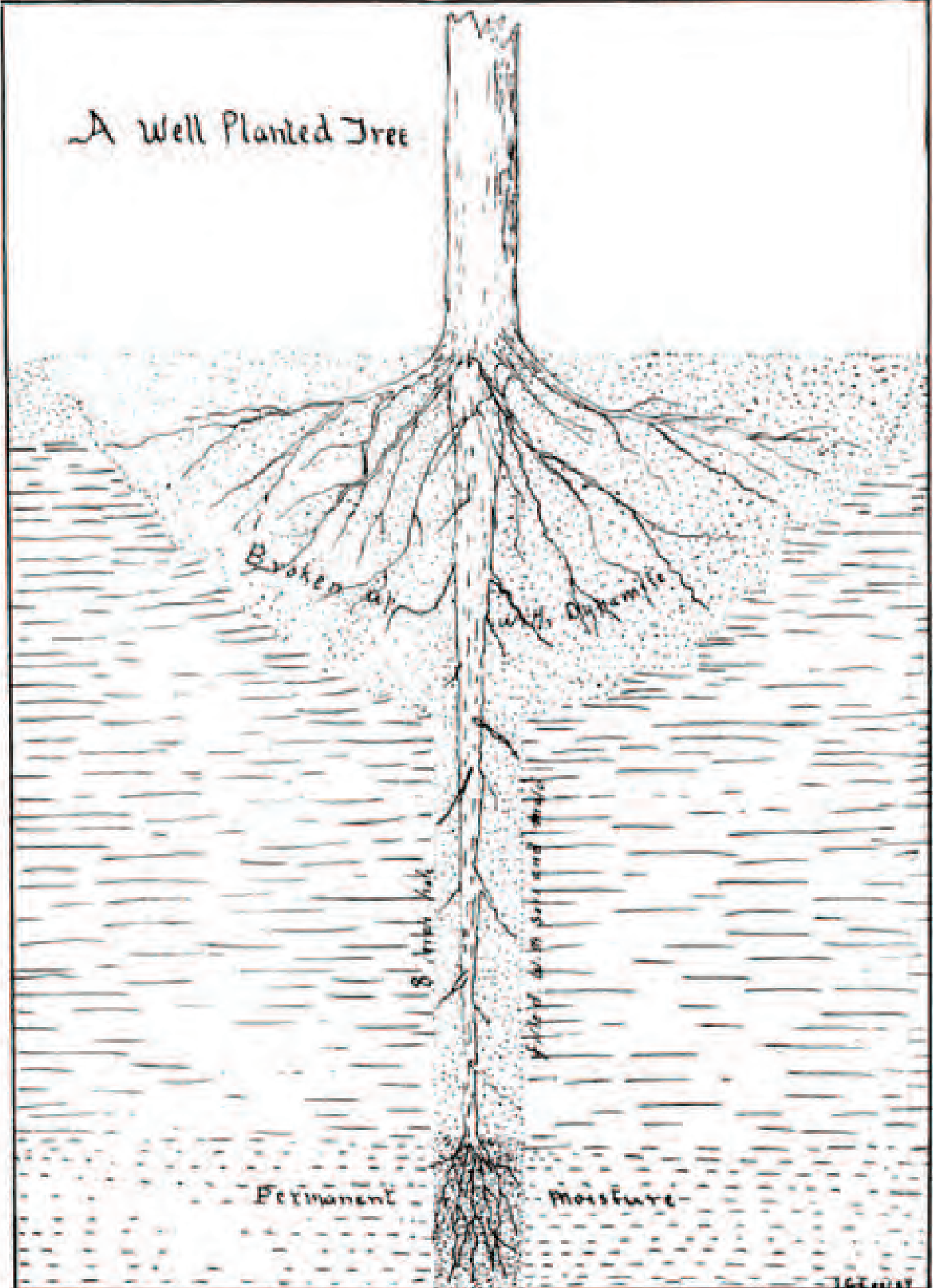
The display submitted by McMinnville Walnut Club to the Alaskan-Yukon-Pacific Exposition in 1909, featuring Colonel J.C. Cooper cracking a walnut. Until the Columbus Day Storm of 1962 wiped out the orchards, McMinnville was the top walnut producer in America.

DETAILS OF WALNUT GRAFTING



J.C. Cooper

A Well Planted Tree





Watch carefully,
the magic that occurs,
when you give a person,
just enough comfort,
to be themselves.

@atticuspoeetry

A luxury lifestyle hotel in Historic Downtown McMinnville
ATTICUS HOTEL / 503-472-1975 / www.atticushotel.com / hello@atticushotel.com